



Westenergie
Your partner in the West
of Germany

Westenergie · company presentation · April 2025

Westenergie is the largest regional energy utility in the Group

Facts and figures E.ON grid business¹



~9.000
Concessions
in Germany



17,4
is the amount of times
the E.ON network would
reach around the Earth



27.000
employees in the
German grid business



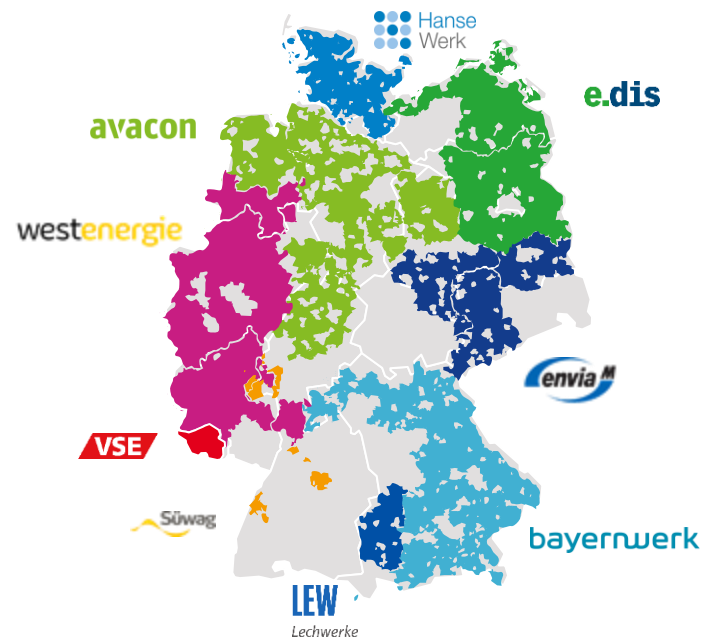
~25 Mio.
people are
supplied by E.ON



378 TWh
grid sales electricity



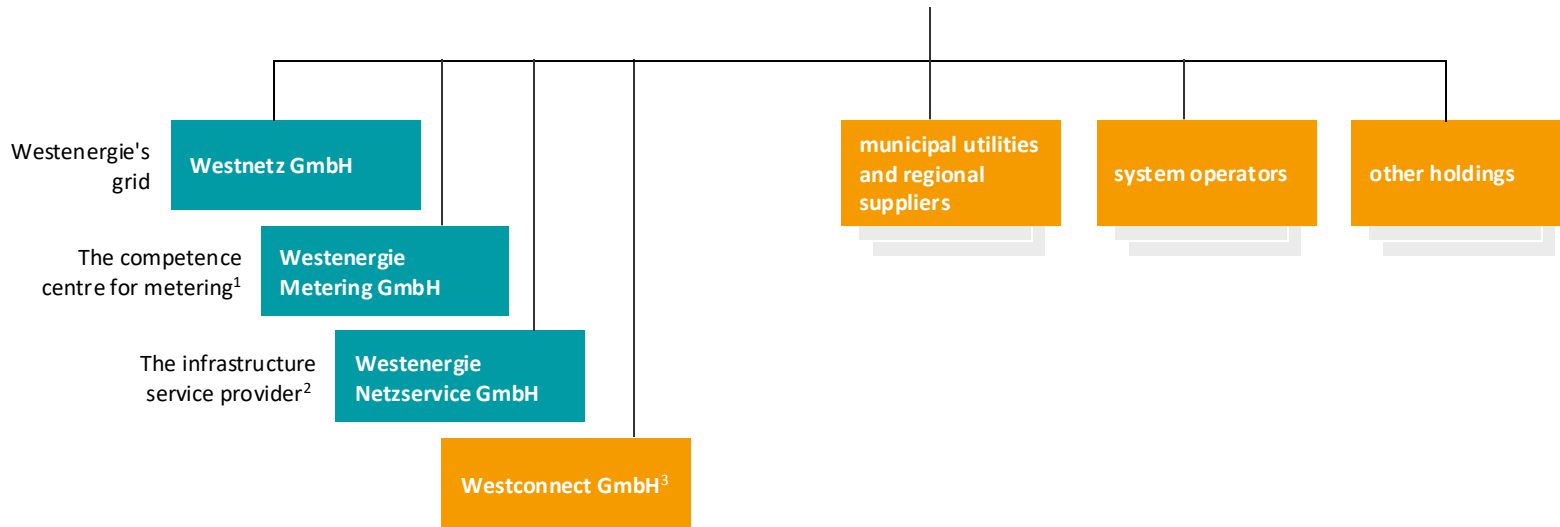
202 TWh
grid sales gas



¹ based on the numbers from 2022.

In addition to the distribution system operator Westnetz, Westenergie holds shares in further functional and regional companies

westenergie



¹ Responsible for 4.4 million electricity, gas, water and heat meters. | ² More than 1 million residents in over 500 municipalities connected to the broadband network. |

³ Westenergie AG has a shareholding of 50 percent.

The Management Board team of Westenergie AG wants to lead the regions actively towards success

CEO



Katherina Reiche

CFO



Achim Schröder

CTO



Andreas Berg

CHO and
Labour Director



Oliver Henrichs

Chairman of the Board
of Directors



Bernd Böddeling

Westenergie is well networked in the regions. Together, we are shaping our future.



Westenergie is the reliable energy partner in the west of Germany.

We are the fabric networking cities, towns and rural areas. Together with them we are shaping the sustainable future of energy. We are the local partners with integrated services, grid and infrastructure solutions, with comprehensive expertise and experience.



Westenergie lives partnership on site. Aligned to customer needs, our portfolio offers tailor-made solutions. We are partners to (municipal) customers and the first point of contact for political decision-makers in the grid area.



We see ourselves as engine and trailblazers of the energy transition.

With a reliable and extensive infrastructure we are creating the necessary conditions for the sustainable energy world of the future. We are leaders in German electricity and gas regulation and the trusted partners of (municipal) customers.



We live our values – safe, focused, consistent, responsible, customer-oriented and sustainable – together, in an open working and innovation culture, characterised by an entrepreneurial mindset and actions, respect and appreciation. We want to be the efficient technology and quality leaders in our business segments with internal cutting-edge data-driven processes and digital solutions.

Facts and figures



Shareholders
E.ON SE (100 %)



Total revenue¹
approx. €8.7 billion



Investments¹
approx. €1,3 billion



Shares⁴
>150 energy utilities



Concession agreements²
approx. 1,640



Employees³
approx. 11,000
Of which are apprentices
approx. 600



Inhabitants supplied^{5,6}
~8 Mio. inhabitants power
~4.8 Mio. inhabitants gas
~1.4 Mio. inhabitants water



Length of power grid⁵
approx. 196,000 km



Length of gas grid⁵
approx. 37,000 km



Length of water grid⁷
approx. 9,000 km



Length of fibre grid⁸
>12,000 km

¹ Figures based on 2024 values | ² Incl. system operators, incl. fully consolidated holdings. Figures based on 2023 values | ³ In FTEs, incl. fully consolidated holdings and incl. apprentices, working students and interns. Figures based on 2023 values | ⁴ Of which are: 40 municipal utilities and regional suppliers, around 75 system operators and around 35 other holdings. Figures based on 2023 values | ⁵ Westenergie Group incl. fully consolidated holdings. Figures based on 2023 values | ⁶ 21 supplied municipalities with water, <500 supplied municipalities with broadband. Figures based on 2023 values | ⁷ Incl. RWW. Figures based on 2023 values | ⁸ Incl. Westconnect. Figures based on 2023 values
Westenergie · company presentation · April 2025

Westenergie's roots are in the regions



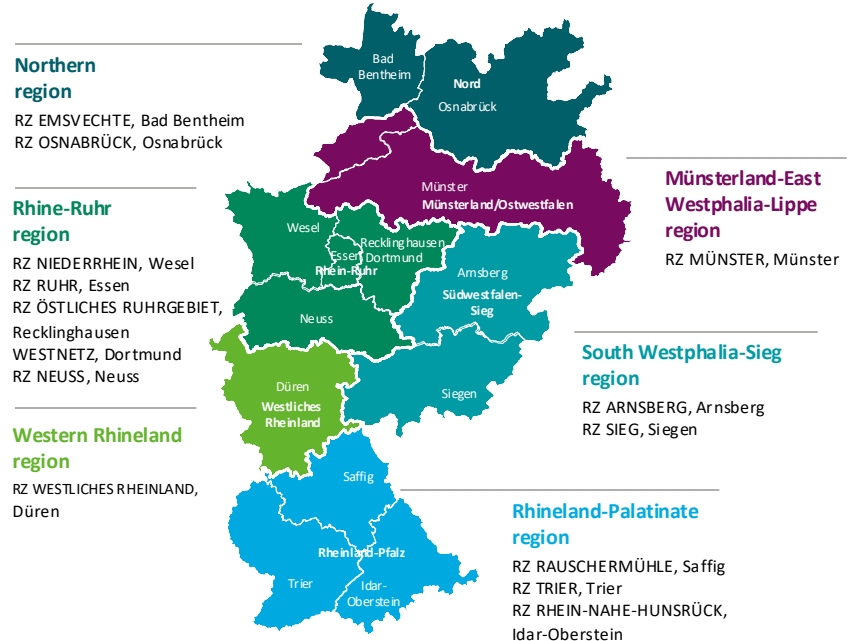
Core area with 13 regional locations from Osnabrück to Trier and from Wesel to Arnsberg.



More than 1.600 partnerships with municipalities to provide people with energy.



Local presence service with municipal partner management.



Westenergie is the strong and reliable partner of municipalities



Partnerships with municipalities have been an integral element of the company's philosophy for **110 years**.



The company ensures the reliable operation of public **street lighting** in approx. **1,000 towns and municipalities**.



Continuous **investments** secure **jobs** in the long term and guarantee **state-of-the-art infrastructure**.



Westenergie guarantees the safe and reliable operation of **power, gas and water grids** in more than **1,600 municipalities** (concession agreement partners).



Strong **local presence** - **personal service** with municipal partner management in **six regions**, with contact persons that are known to the partners.



Through **marketing and sponsoring activities**, we show needs-based **engagement in the regions**.



Our portfolio includes **integrated services as well as grid and infrastructure solutions** for municipalities.

Westenergie shares entrepreneurial risks and successes with over 150 shareholdings

~40
municipal utilities and regional suppliers¹



We are a **strategic partner for our holdings**, support their business development and regionally funded projects.

~75
system operators²



We provide them with **specialist expertise**, **offer technical exchange** and **know-how transfer** (e. g. in regulation management).

~35
other holdings³

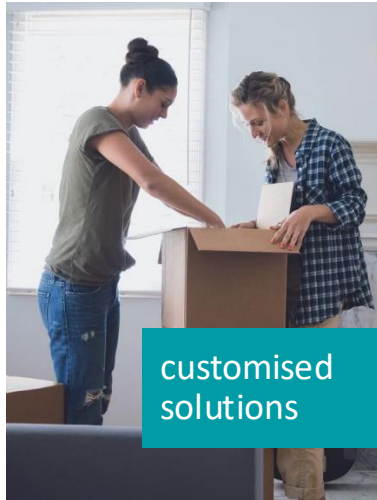


In the **association „The Network Partners“** we have a common platform for the exchange of information and services.

¹ Of which are: 7 fully consolidated holdings | ² Of which are: 2 fully consolidated holdings | ³ Of which are: 7 fully consolidated holdings; this includes f. e. our investments in the area of water and renewable energies.

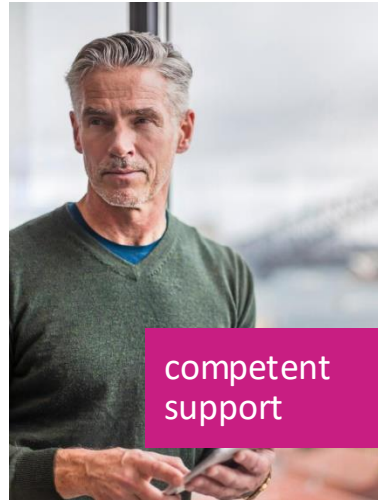
Westenergie delivers ...

... for its partners



customised
solutions

... locally



competent
support

... for the region



security for the
future